



***Power & Process Plant Consultants Pvt Ltd.  
Company Profile***



# About Us

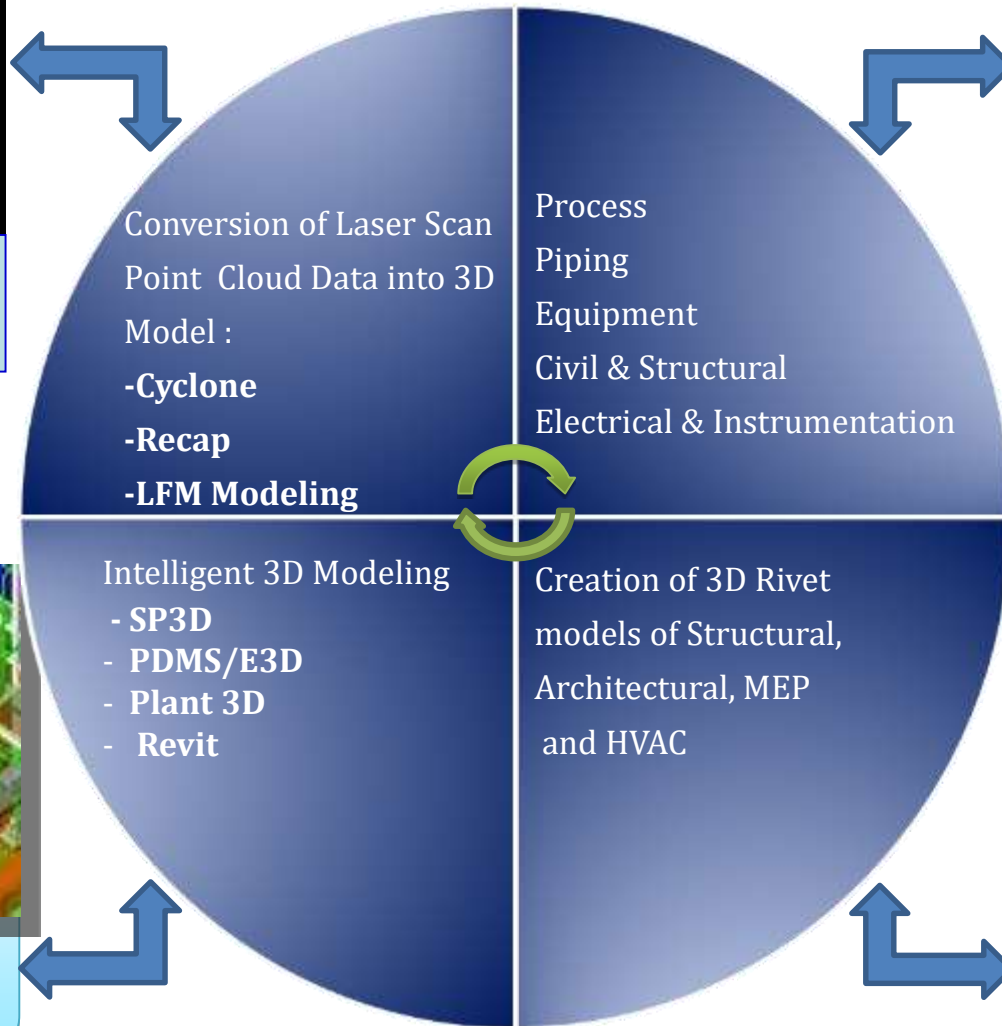
---

- Power & Process Plant Consultants (PNPC) is a privately owned limited company Formed in 2006 having its head office in Hyderabad India, is a professional Plant 3D Modeling & Drafting services orientated company with an extensive plant design & As built capabilities providing services utilizing latest technologies available in the market
- Our Services address various industry verticals which encompasses projects in Oil and Gas Industry, Power plant engineering, Building Information Management, Refinery Chemical/Petrochemical, Ship building and other process industries. We are specialized in brown field engineering using laser scan technology for data capture and providing fully intelligent 3D models and 2D deliverables.
- **Our Mission**

Quality is our top priority at all times for Power & Process Plant Consultants. Our objective is to contribute to the advancement and progress of our culture through consistent Quality Services, under all circumstances to meet our customer needs



# Services Offered



**Laser Scan 3D Modeling**

**Design & Detail Engineering**

**3D Modeling /CAD**

**BIM**

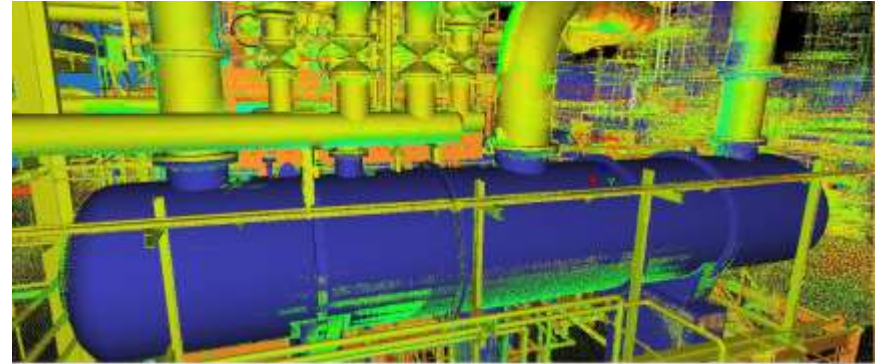




# 3D Modeling / CAD Services

---

- As built Laser point Cloud Modeling
- Intelligent 3D Model Building
- Smart P&ID Creation
- GA Drawing Creation
- Steel Detailing
- REVIT
- BIM
- Plant-3D





# Providing Services to Industries





## **Experience : 3D Modelling Projects**

---

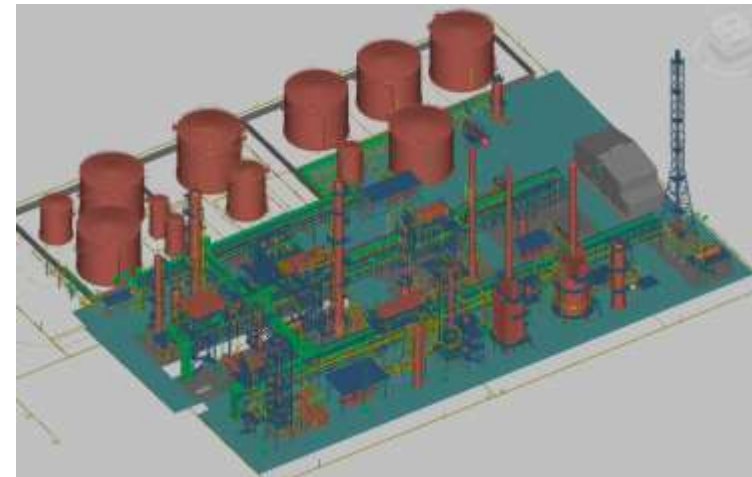


# EMLAB Project : Cyclone & PDMS Intelligent 3D Model

---



Elevation View



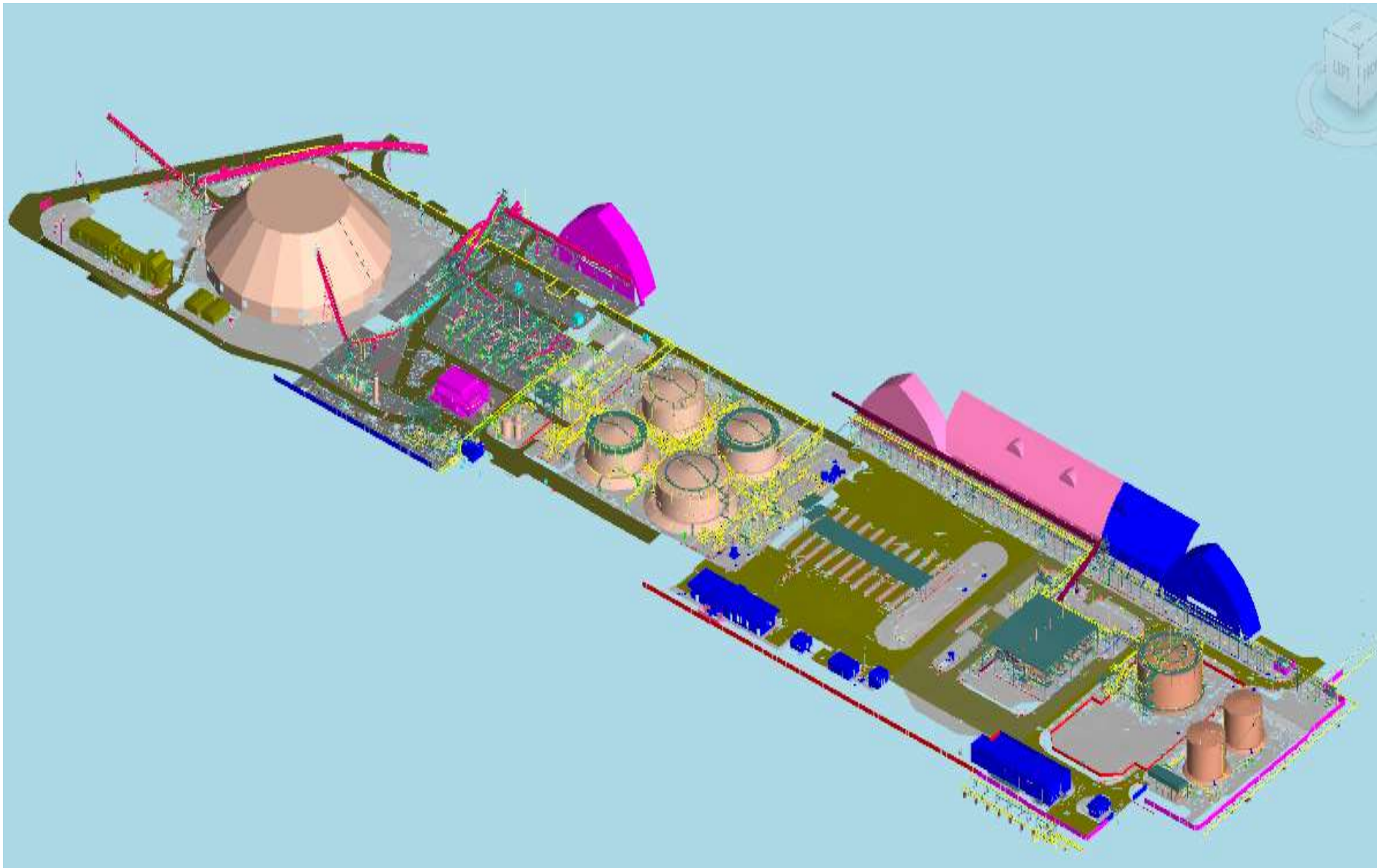
Isometric View

## Project Description/Scope of Modelling:

Conversion of Laser Scan Point Cloud to Reference 3D Model and subsequent conversion to Intelligent PDMS 3D Model & extract As built Dwg's (GA's & Piping Isometrics?)

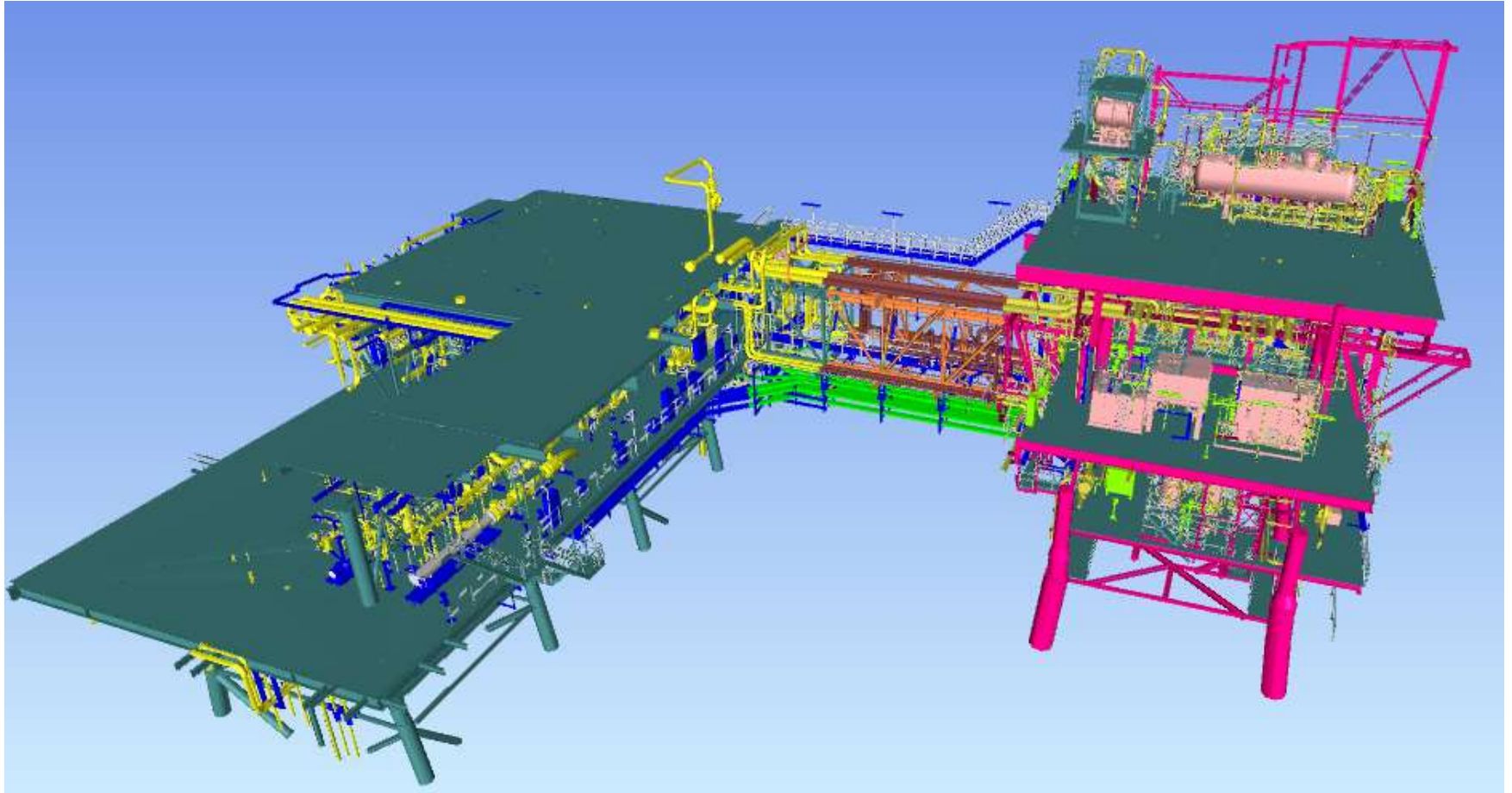


# Oil Refinery : PDMS Intelligent 3D Model



Isometric View

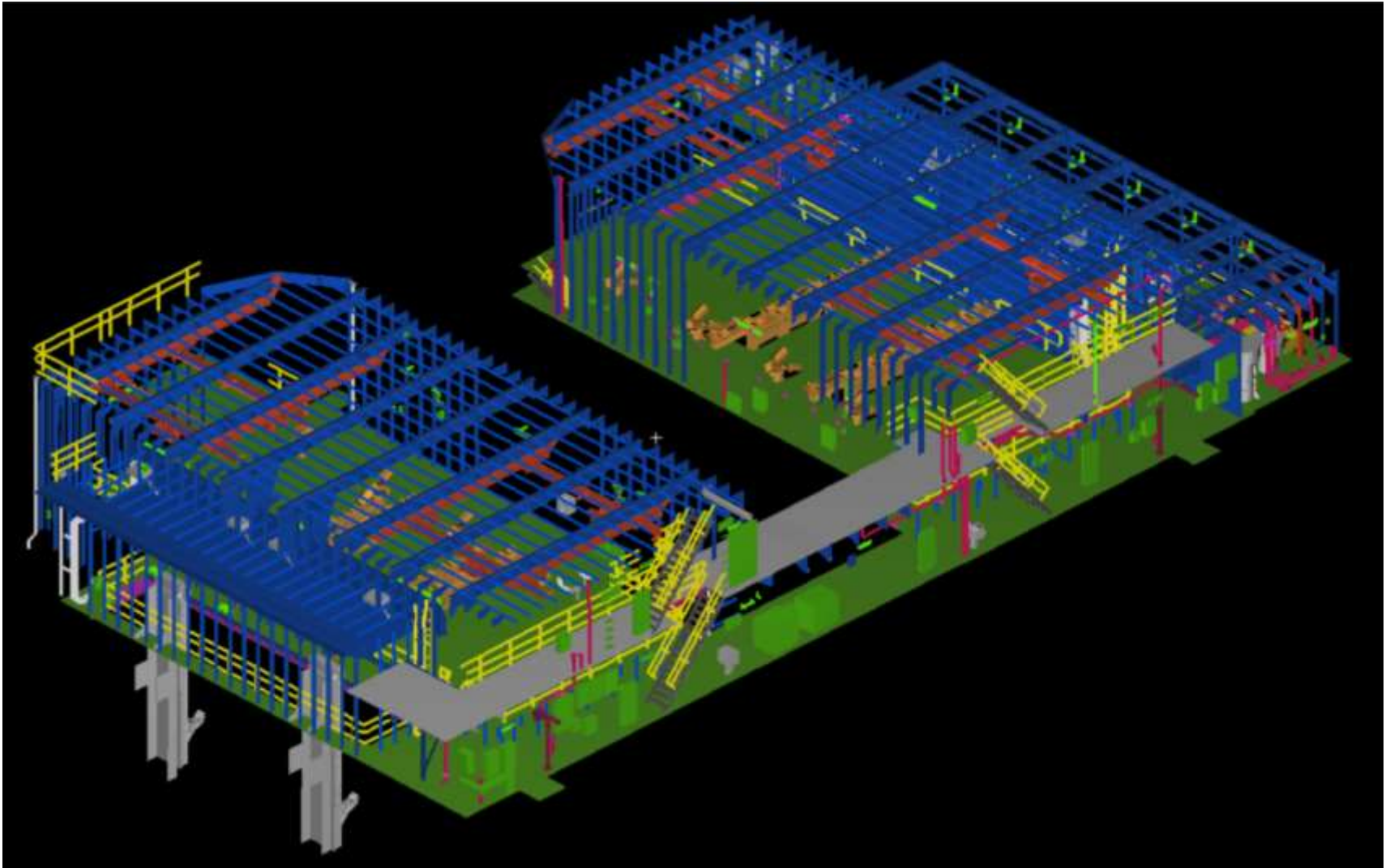




Isometric View

# Ship Engine Room : As Built 3D (Cyclone)

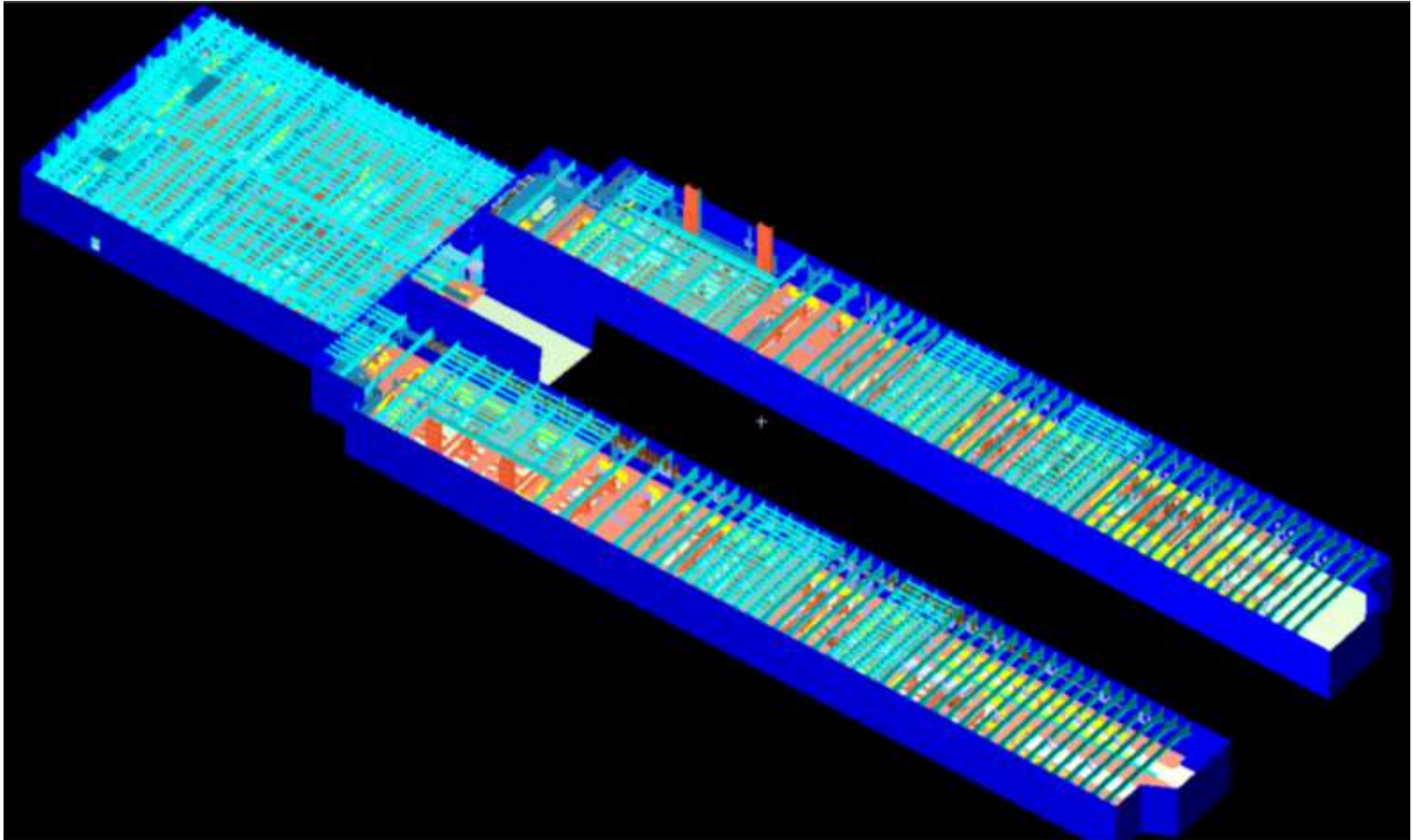
---



Isometric View



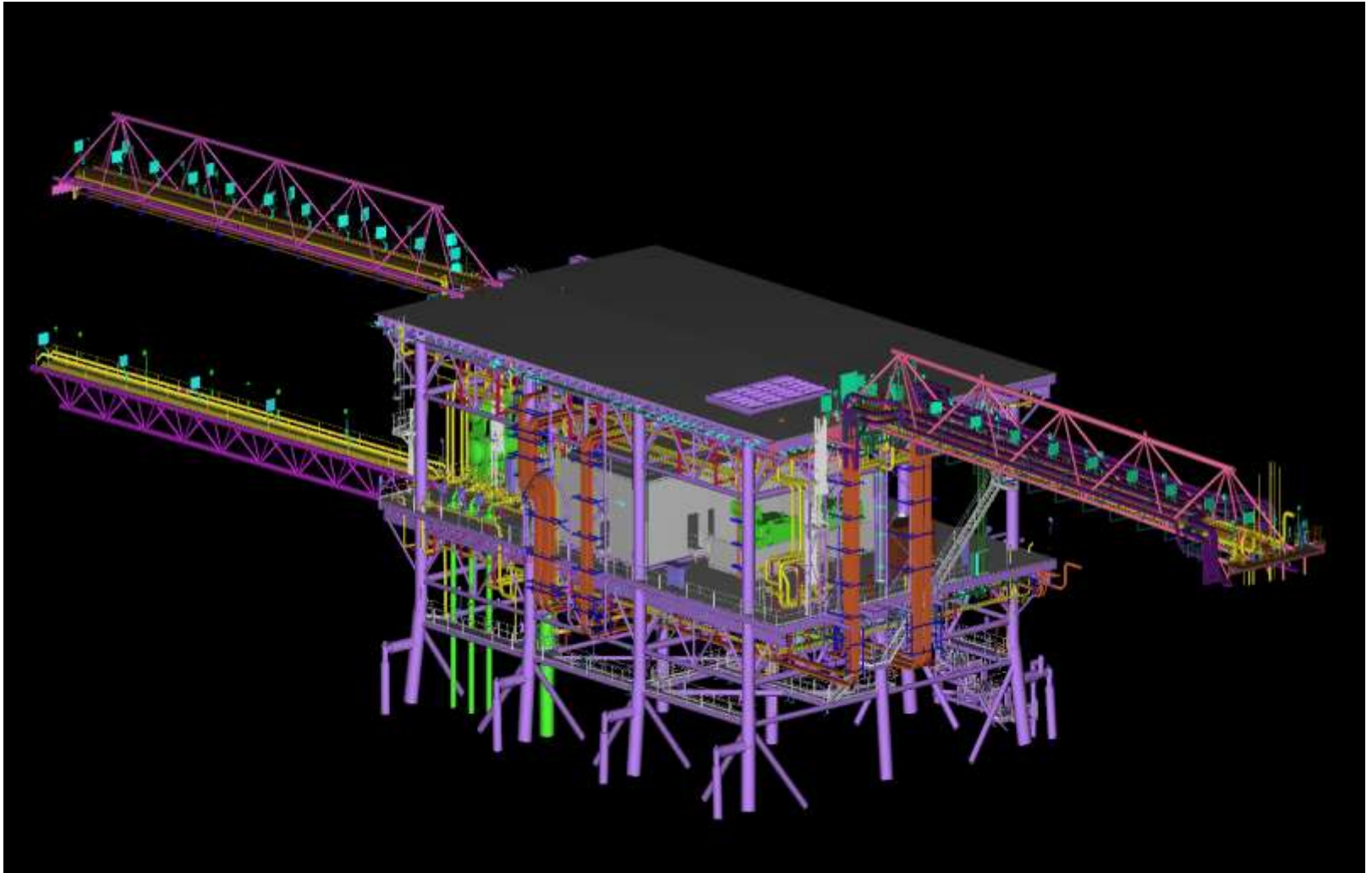
# Ship Engine Room : As Built 3D (Cyclone)



Isometric View

# Auxiliary Platform with Bridges : Plant-3D Intelligent 3D Model

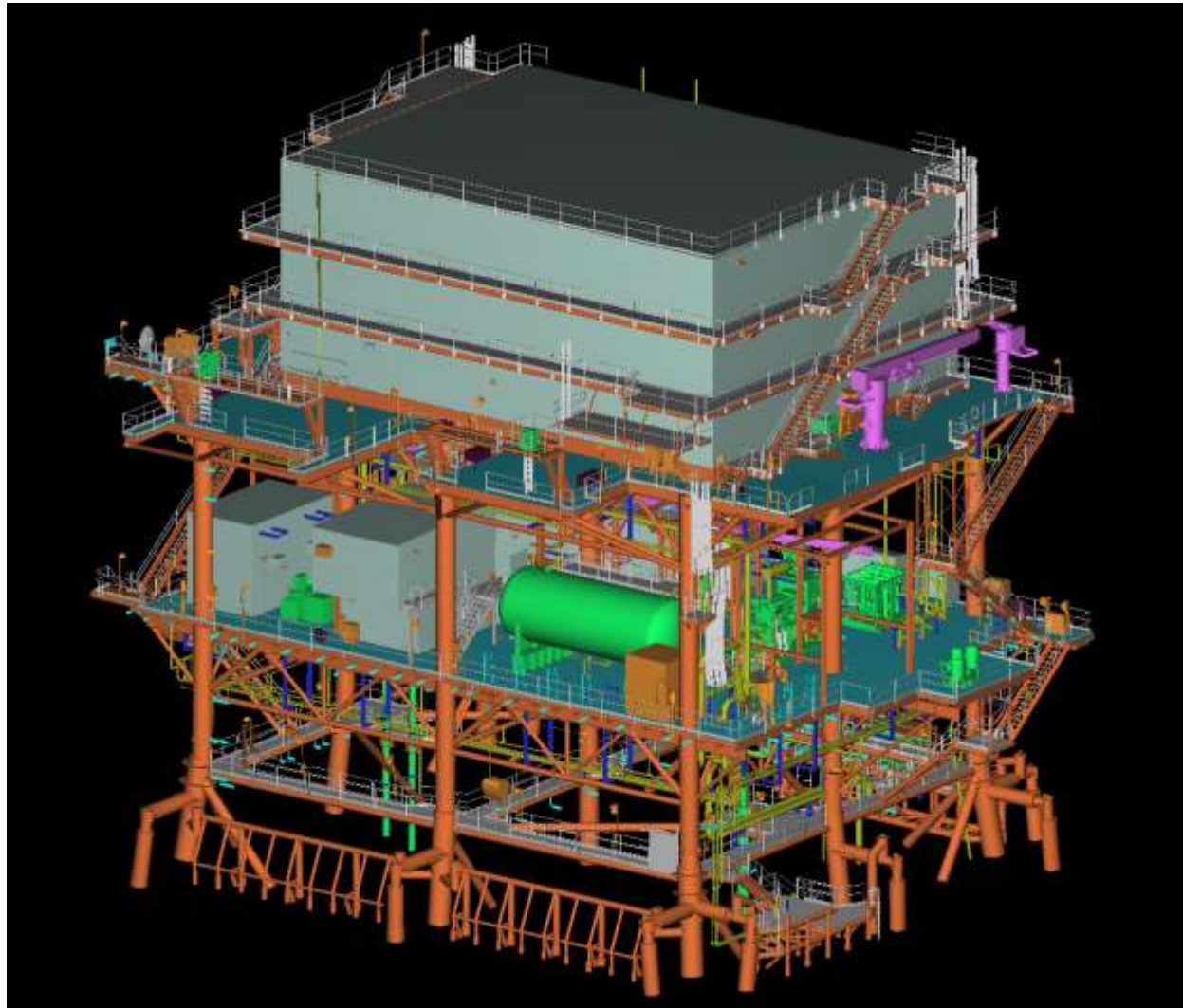
---



Isometric View

# Living Quarters Platform : Plant-3D Intelligent 3D Model )

---



Isometric View



# Offshore Platform Complex : As Built (Cyclone & PDMS )

Project : Mike Mike Complex  
Location : BP West Java - Indonesia

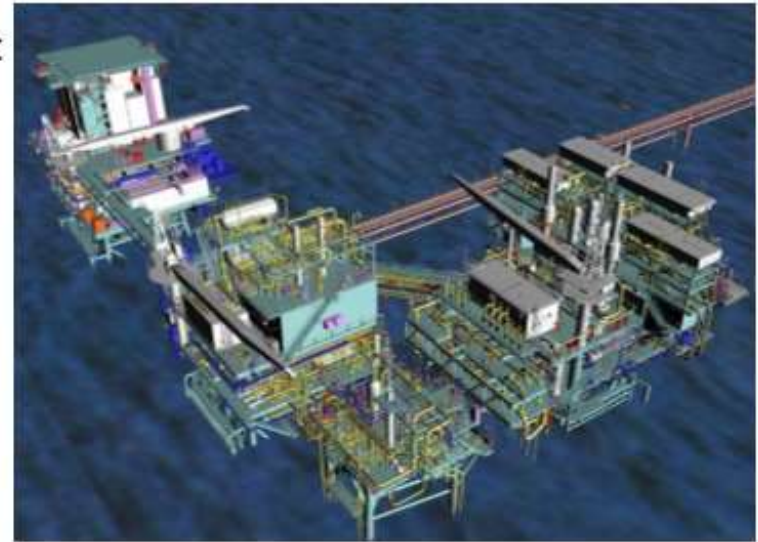
## . **Scope of Work:**

To do Laser Scanning Survey & develop fully intelligent Pdms Model for BP Mike Mike Complex for.

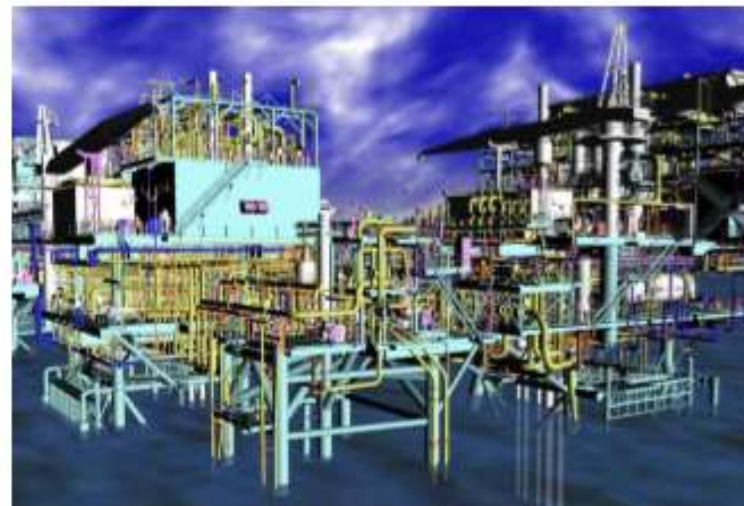
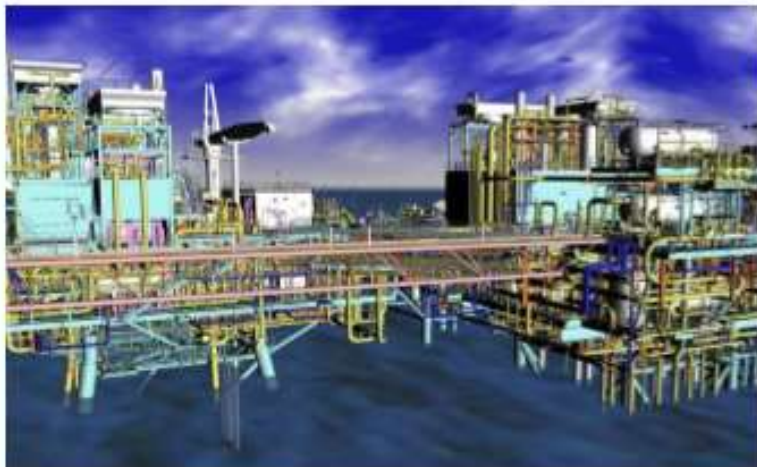
1. LA Platform
2. LS Platform
3. LPRO Platform
4. LCOM Platfor

## **Modeling:**

- Physical data was captured using Laser Scanning for all the platforms and the point cloud were processed and exported to PDMS for modeling
- Conversion of Laser Scan 3D Model to Intelligent PDMS 3D Model , Clash Check and Provide 2D As built Dwg's



# Offshore Platform Complex : As Built (Cyclone & PDMS )





## Refinery Unit : As Built (Cyclone & PDMS)

Project : CENCO REFINERY

Location : Los Angles - US

### . **Scope of Work:**

To do Laser Scanning Survey & develop fully intelligent Pdms Model for 5 Units of the Refinery.

1. Vaccum Unit
2. FCC Unit
3. Merox Unit
4. Unifier
5. Gascon

### **Modeling:**

- Physical data was captured using Laser Scanning for required areas and point cloud were processed and exported to PDMS for modeling



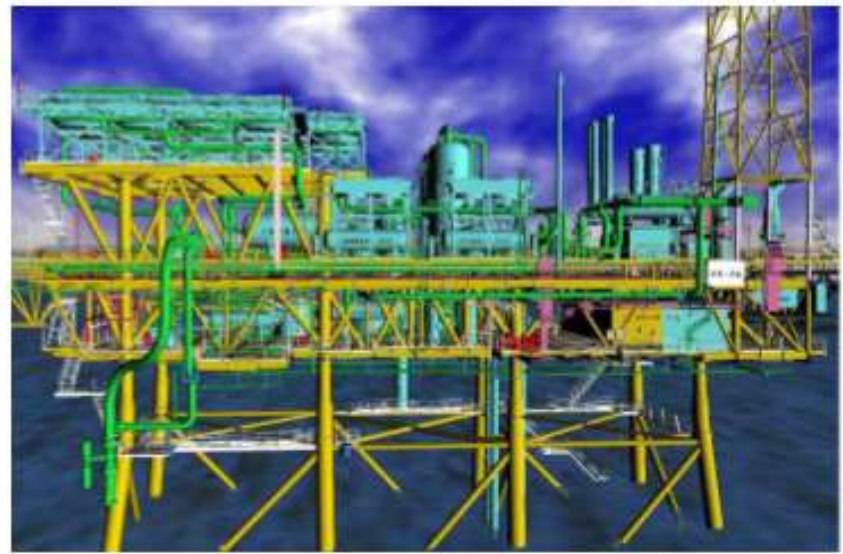


## F6 Production Platform



Actual Platform-Photograph

## F6 Production Platform



Asbuilt PDMS Model developed  
Using Laser Scanning



## Module : As Built (Cyclone & PDMS )

---

Project : **Shell F6 Complex – Rejuvenation Project**

Location : Malaysia

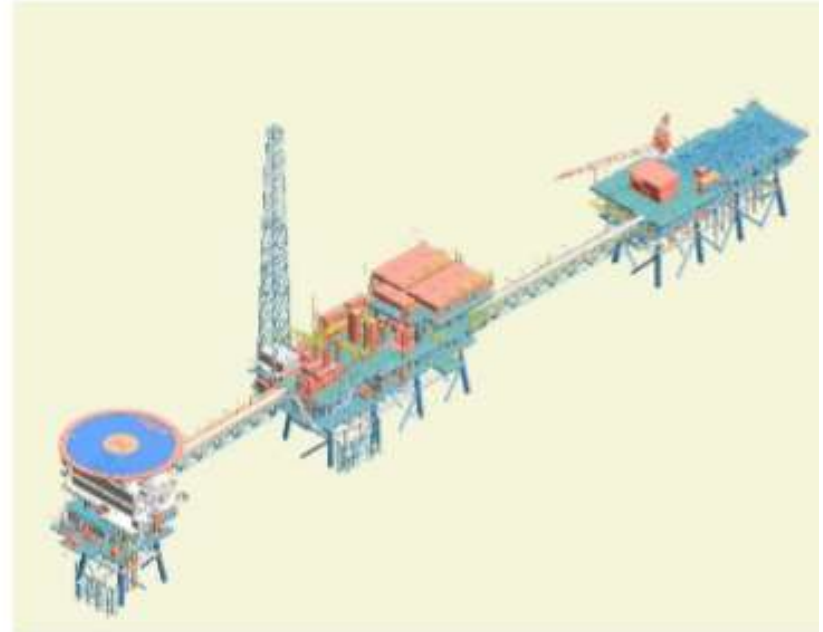
### **Scope of Work:**

To do Laser Scanning Survey & develop fully intelligent Pdms Model for following Platforms.

1. Drilling Platform
2. Production Platform
3. Living Quarters Platform
4. Connected Bridges

### **Modeling:**

- Physical data was captured using Laser Scanning for required areas and point cloud were processed and exported to PDMS for modeling
- Conversion of Laser Scan 3D Model to Intelligent PDMS 3D Model , Clash Check and Provide 2D As built Dwg's





# Satellite Platform : As Built (PDMS)

Project : **Murphy Oil WPP– Rejuvenation Project**

Location : Malaysia

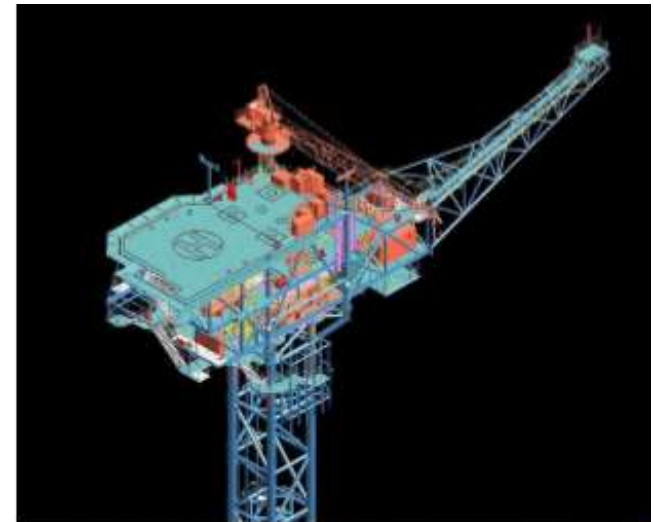
## . **Scope of Work:**

To do Laser Scanning Survey & develop fully intelligent Pdms Model for following Platforms.

1. WPA Platform
2. WPB Platform
3. WPI Platform

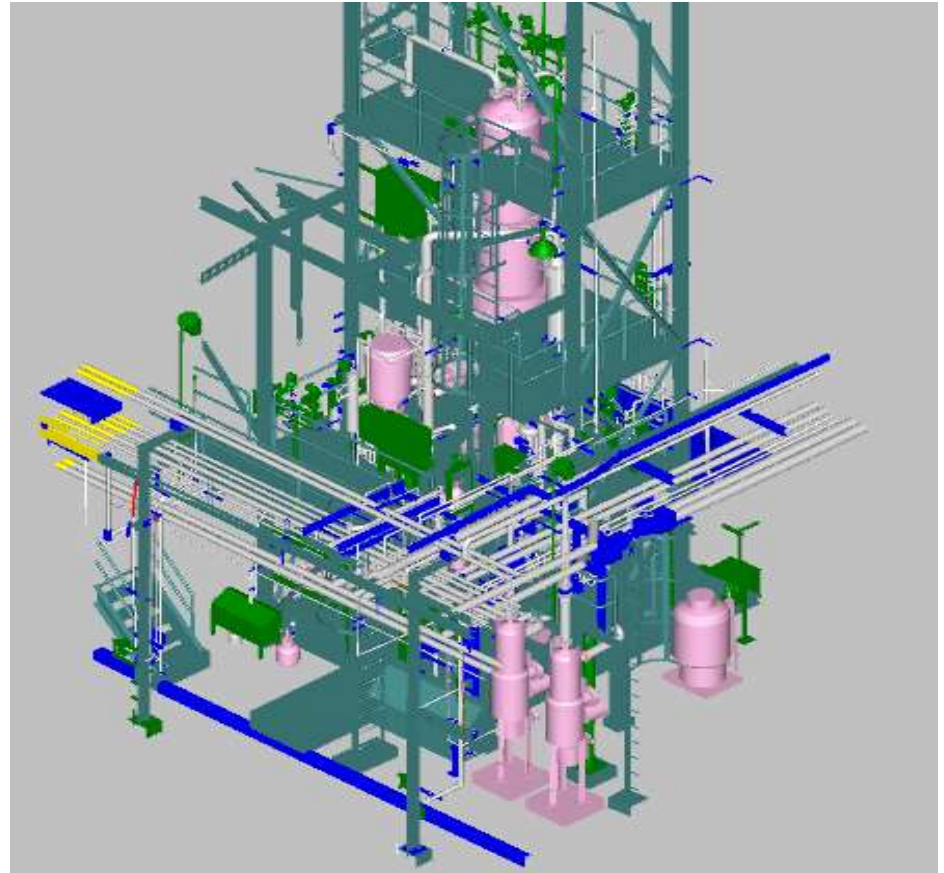
## **Modeling:**

- Physical data was captured using Laser Scanning for required areas and point cloud were processed and exported to PDMS for modeling
- Conversion of Laser Scan 3D Model to Intelligent PDMS 3D Model , Clash Check and Provide 2D As built Dwg's and Isometrics for documentation



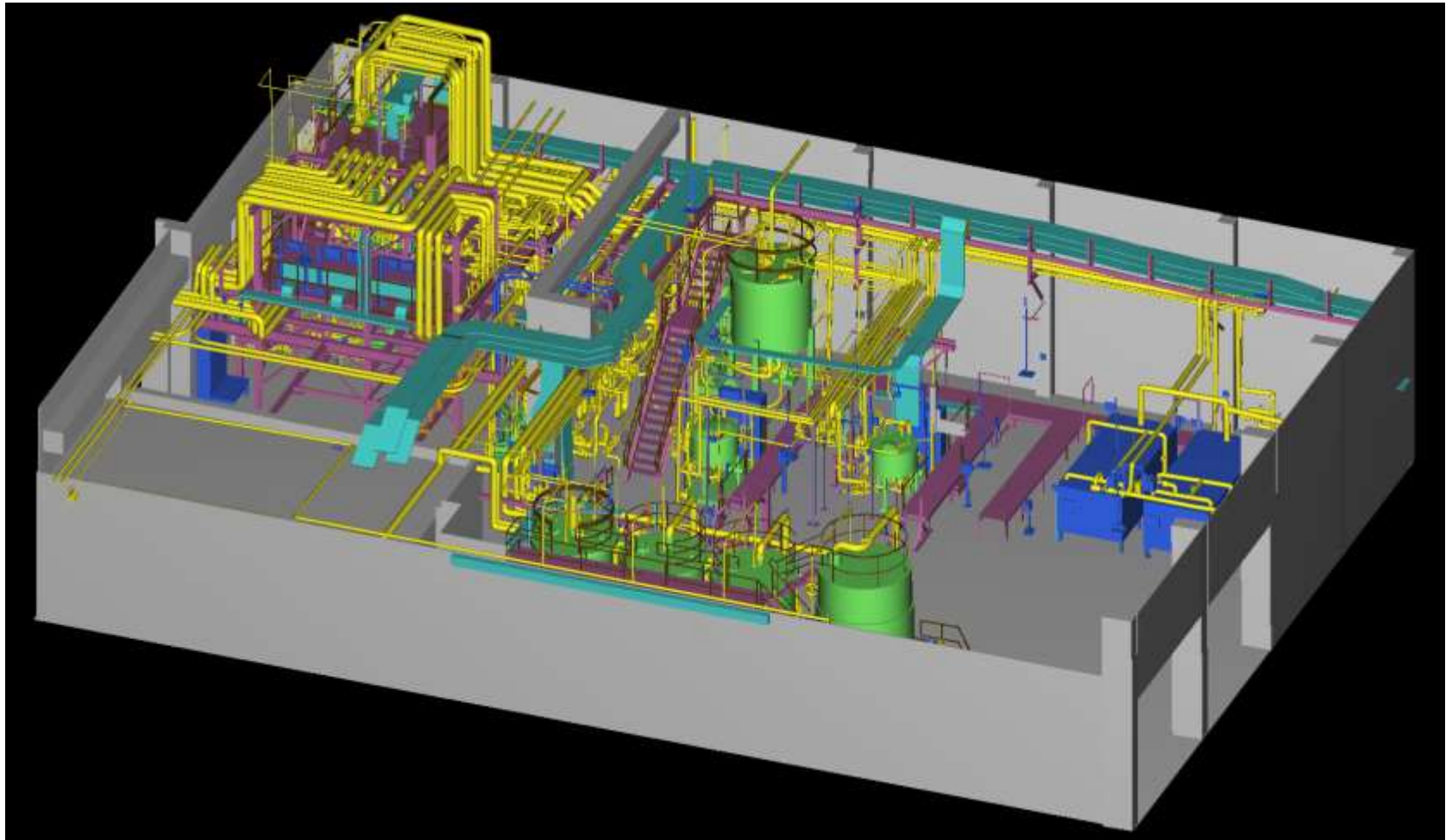


Isometric View:Cyclone



Isometric View : SP3D

# Power Plant Facilities : As Built (Cyclone)



Isometric View



# Offshore Platform : As Built (Cyclone Model)

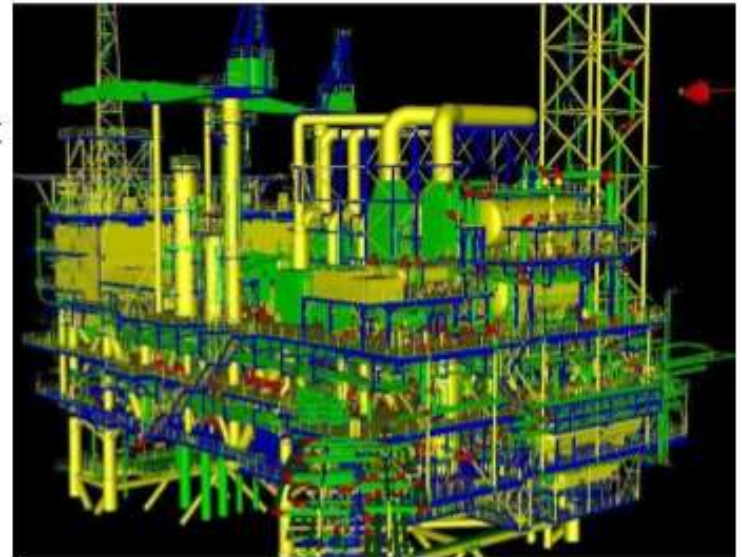
Project : BRA Talisman  
Location : Malaysia

## Scope of Work:

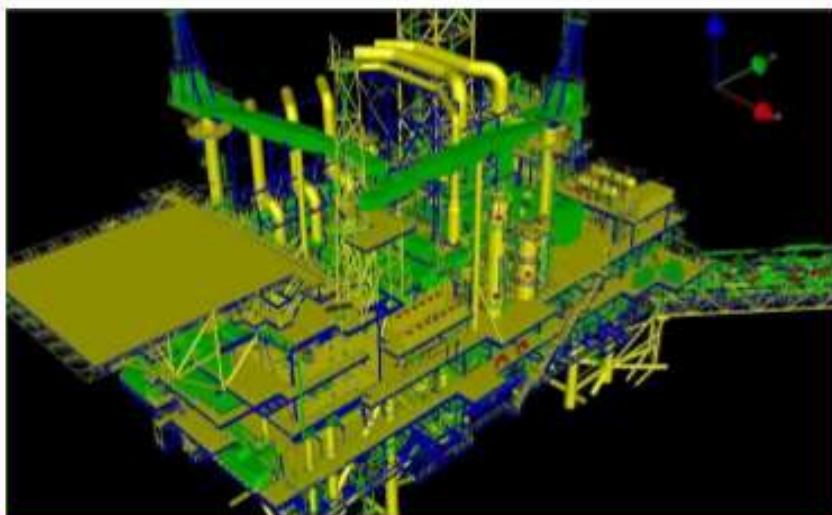
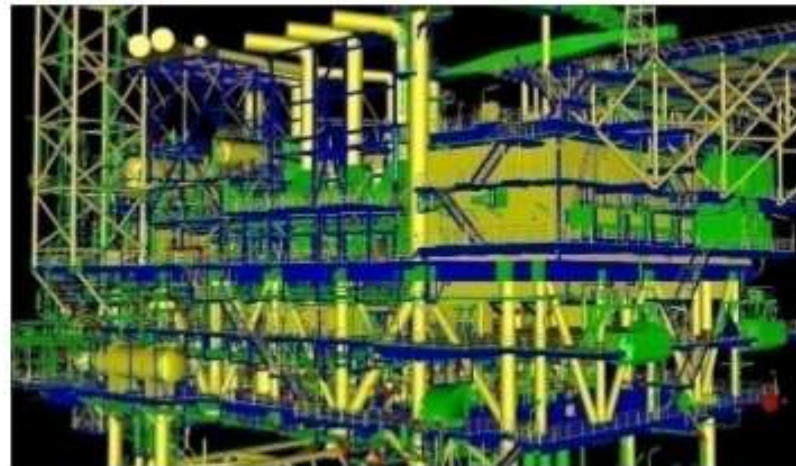
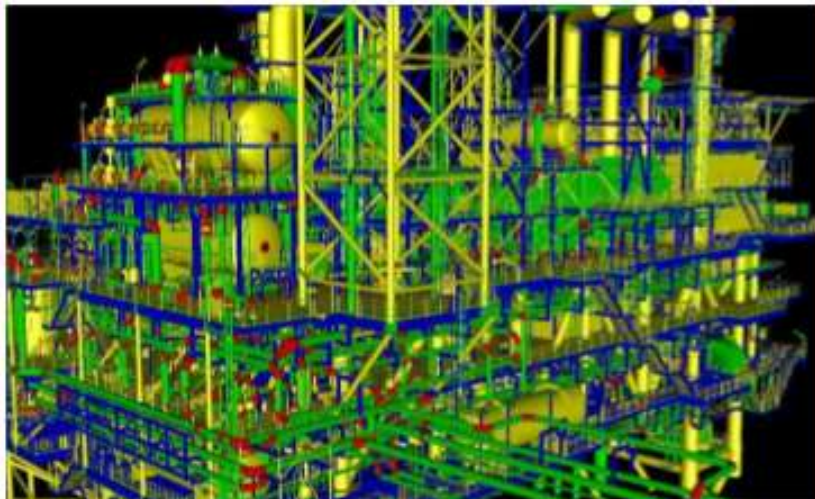
To do Laser Scanning 3D Model & develop fully intelligent Pdms Model for BRA Platform:

## Modeling:

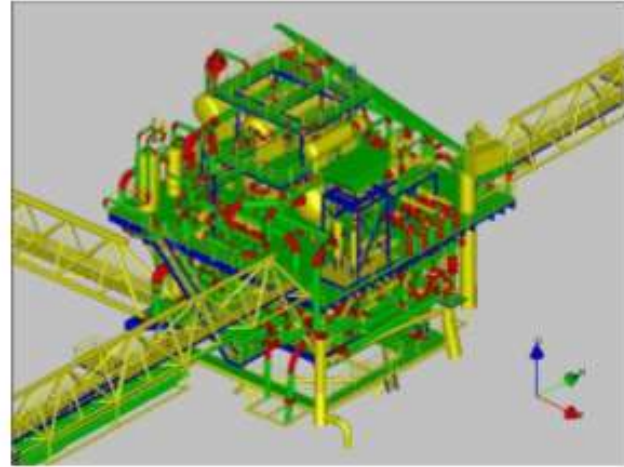
- Physical data was captured using Laser Scanning for required areas and point clouds were processed to generate Laser Scan 3D model
- .Conversion of Laser Scan 3D Model to Intelligent PDMS 3D Model , Clash Check and Provide 2D As built Dwg's and Isometrics for documentation



# Refinery Unit : As Built (Cyclone Model)



# Offshore Platforms: As Built (Cyclone Model)







# *Thank you*



**Gopiraju T,  
Technical Manager,  
Power and Process Plant Consultants Pvt.Ltd  
Hyderabad, TELANGNA 502032  
INDIA,  
Contacts:9392176844  
[gopiraju@pnpc.in](mailto:gopiraju@pnpc.in) | [Info@pnpc.in](mailto:Info@pnpc.in)**